

# ASSET HEALTH TOOL

V 001

10.19

**PSW Integrity has developed a cloud/iPad based optimised operator care programme for the complete deliverable of asset integrity management.**

**PSW Integrity developed and manage a reporting platform to enable operators to easily report on asset condition based on daily/weekly routines. The data is collected using PSW Inspector and seamlessly synchronised with the cloud where the data is visualised into an asset hierarchy and visual dashboard for easy trending of asset data to optimised operations.**

PSW integrity understands the principles of performance and reliability optimisation. Using our proven tools, training and processes, PSW Integrity effectively delivers, in an accelerated approach, the ability to manage customers assets in the most effective, efficient and safe manner through the asset lifecycle.

## Product benefits + Features



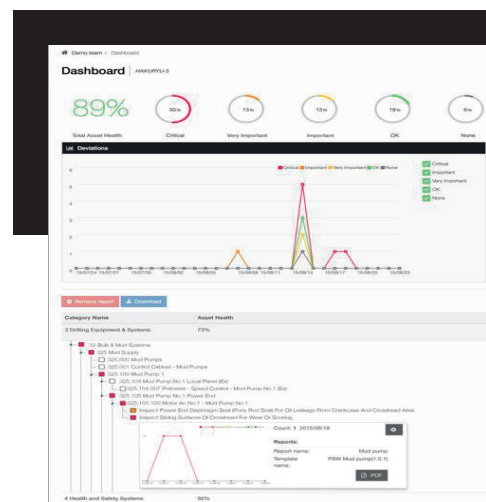
Quick and easy to use mobile reporting system

Reduce time spent on reports and training. Leverage your current IT infrastructure including secure integrations to your ERP, EAM, or CMMS systems with the world's most modern reporting system.

Flexible and scalable financials

Our cloud-based solution and pay per user license make it easy to scale the system throughout your organisation and ensure you only pay for what you need.

PSW has an in-depth knowledge of asset management implementation throughout decades of experience within the PSW Group. PSW have equipment failure and PM data /case histories from hundreds of global projects and this knowledge and experience is vital to all of our clients to ensure they have world-class best practice management within, based on statistics, benchmarks and global standards



A great user experience improves data quality

Compared to traditional systems, PSW Inspector provides easy to use data collection, user guidance and in-app support that help improve the accuracy and quality of the collected data.

Made for the industry

We provide a full range of components to support use in the hardest environments with IP68 or IS Class 1 Div 2/ATEX Zone 2 rugged device protection.